

# EXE REGATTA CRUISER RACE SATURDAY 12 JULY 2025

## PASSAGE RACE TO BABBACOMBE

### Rules and Sailing Instructions

#### Basic Information:

Tides (not to be used for navigation)

low tide	02:15	0.58m
high tide	08:45	3.22m
low tide	14:25	0.64m
high tide	21:02	3.53m

Fleet Race Captain – Emmet .

Call Signs to whole racing fleet should be “DOLPHIN FLEET” on channel 77.

#### 1. Rules

Races will be under the current I.S.A.F. racing rules, the prescriptions of the R.Y.A., and these Sailing Instructions.

#### 2. Entry

All competitors must complete the entry form at:

<https://forms.gle/waKv8N2y3FfjVkm6>

This will include adding their VHF MMSI nos. and ticking a box to confirm agreement that details can be shared with the committee boat and race captain as safety protocol.

On entry you will be required to declare your PY or club handicap. Those not able to do so will be allocated a handicap based on the entry information they have given.

#### 3. Safety and Personal Buoyancy & Insurance

The safety of a boat and the entirety of boat management, including insurance, will be the sole responsibility of the owner/skipper sailing the boat. The establishment of these Sailing Instructions in no way limits or reduces the owner/skipper's responsibilities.

The owner/skipper will decide whether the boat is fit to sail in the conditions in which she will find herself. By going to sea, the boat confirms that she is fit for these conditions & her crew is competent to sail & participate take part in them.

Effective personal buoyancy will be always worn when afloat with the short exception periods while changing or adjusting clothing or personal equipment.

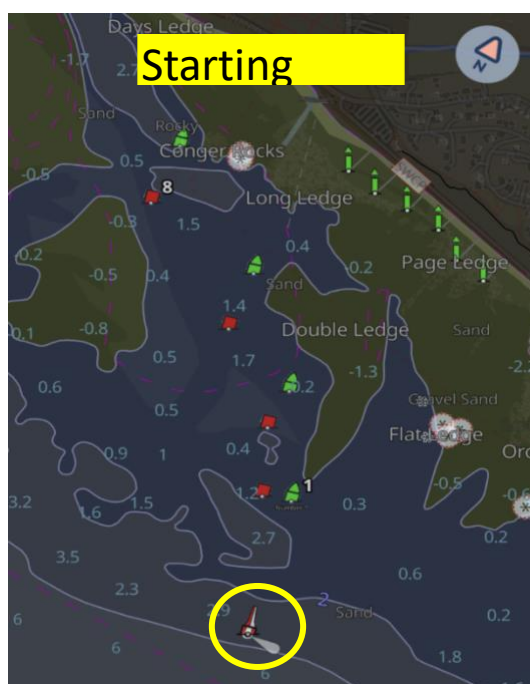
Safety harnesses will be available on board and must be used when there is a risk of a 'Man Overboard' situation.

VHF Channel 77 to be used for boat-to-boat communication during Club events, unless stated otherwise by the Exe Regatta Team or the by Fleet Captain for that event. Since this is a self-timed race, all competitors shall ensure that they have informed the Fleet Captain of their presence in the race, who will inform the coastguard of the number of boats that will be leaving as part of this race.

#### 4. Start/Finish

The race will **begin** from the Safe Water Mark at Exmouth 09:00 (HT 07:43, 3.4m): where the start line will be a line between the Starting Committee Boat and the Exe Safe Water Mark. All competing boats should be in the vicinity of the start line at least ten minutes before the start signal and should pass close to the Committee boat to enable their sail number can be identified.

The race will **end** by passing within 60m of the pier at Babbacombe (see images below).



## **5. Starting Procedure**

The Starting Committee boat will sound a long warning horn at 5-minutes to go. The race will begin on the sound of two short horn blasts 5 minutes later.

## **6. Timing**

This is a self-timed race; all boats will measure their elapsed time to passing the pier at Babbacombe in respect to the second starting short blast horn.

All boats shall call on channel 77 as they finish, as they pass Babbacombe Pier.

You must keep a note of your time, where it should be formally passed/called in to the fleet race captain once all have arrived at Babbacombe. The fleet race captain will notify you who they are on the day.

You should record your time in Minutes and Seconds.

## **7. Course and Additional Rules**

Your route should pass within 60m of the Teignmouth Outfall Buoy (which additionally shall serve as the half-way mark) and continue to Babbacombe ending within 60m of the pier.

Cruisers are permitted to use automatic steering

## **8. Inclement Weather or Changes on the day**

Based on available weather forecasts and any emerging additional hazards, the event organisers and Fleet race Captain reserve the right to cancel or postpone the event until the start time.

Race Abandonment: Should it be required, the decision to abandon a race will be made by the Fleet Race Captain and will be communicated to all competing boats on VHF Channel 77.

Additional planning scenarios will also apply.

If the lead boat takes more than 3.0hrs to reach the Teignmouth Outfall Buoy, the race will be shortened and will finish as boats pass due west (mag) of the outfall buoy and within 60m.

If the Fleet Race Captain considers that the race cannot be completed in a reasonable time, or if conditions are becoming adverse., the shortened course will be confirmed by radio, call sign 'DOLPHIN Fleet' on VHF Channel 77 and will be confirmed as the Teignmouth Outfall Buoy.

## **9. Retiring**

Should a boat retire from the race, intent must be conveyed to the Fleet Race Captain on VHF Channel 77.

## **10. Handicap**

This is a Portsmouth Yardstick Race. The time limit for the race will be such that a boat's corrected time does not exceed 6 hours. For guidance, some Portsmouth Numbers are listed below with their appropriate Time Limit. All boats must register their PY or handicap on the registration form ahead of the race.

PY	Time Limit
900	5.4 hrs
1000	6.0 hrs
1100	6.6 hrs
1200	7.2 hrs
1300	7.8 hrs

## **11. Lunch and Return Journey**

On arrival at Babbacombe there should be a couple of hours for lunch and chit chat at anchor. Competitors are then able to make their way home to the Exe (HT is 19:57, 3.7m) or continue on their journeys further west.

## **12. Award Presentations**

The winner will be announced whilst at anchor in Babbacombe and the award presentation will be the following week at Starcross Yacht Club at the close of the Regatta.